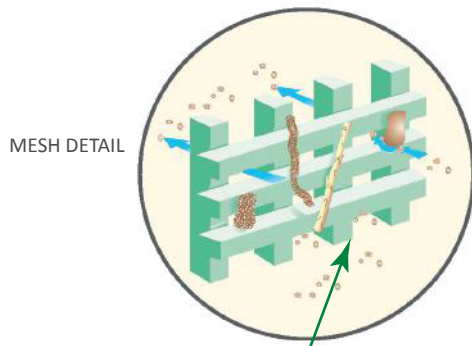
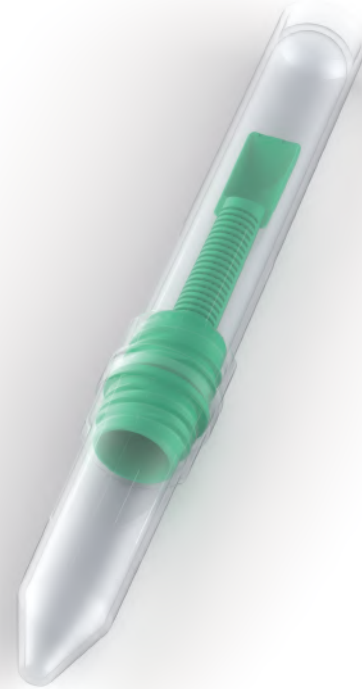


FOR FAECAL CONCENTRATION OF HELMINTH OVA AND LARVAE / PROTOZOA CYSTS AND OOCYSTS

APACOR

Mini Parasep[®]
FAECAL PARASITE CONCENTRATOR
SF



SELF STANDING
SAMPLE CHAMBER

MIXING CHAMBER

INTEGRAL
SPOON

Filter

A triple stage matrix filtration. Large particles are rejected without obscuring the 425 m filtration. Recovery rate with Parasep[®] is comparable to traditional sieve method, ie : Ridley-Allen. The vertical filter enclosed design is patented.

Debris Trap

Rejected particles are trapped to prevent extrusion into the Sedimentation Cone during centrifugation.

Air/Liquid Seal and Safety Lock

The 'seal' prevents the release of biohazardous material. The 'lock' ensures the Mixing Chamber and Filter are removed together for safe disposal.

Sedimentation Cone

Sediment forms in the base of the cone allowing examination for the presence of helminth eggs or larvae and protozoa cysts or oocysts.

Health and Safety Benefits

- Totally enclosed/sealed process
- Reduced reagent volumes
- No cleaning required
- Single use, no sample contamination
- Ready to use systems available

Performance Benefits

- Optimum sample recovery
- Enhanced sample clarity
- Rapid four step process
- Human resources optimised
- Easy patient identification
- Fits all 15ml centrifuge buckets

PARASITOLOGY

SINGLE USE IN VITRO DIAGNOSTIC DEVICE

Procedure

STEP 1 - SAMPLE PREPARATION

Fresh Samples

For empty Parasep[®], unscrew lid and add 3.3ml of fixative and one drop of surfactant (eg: Apacor Triton X solution) to the mixing chamber.

Alternatively use the reagent ready Mini Parasep[®] SF.

Introduce a level scoop of faecal sample to the fixative using the spoon on the end of the Mini Parasep[®] SF filter.

Mix in thoroughly with the Mini Parasep[®] SF spoon. If the sample is hard, break it up with the end of the spoon.



STEP 2 - EMULSIFICATION

Seal the Mini Parasep[®] SF by screwing in the filter/ sedimentation cone unit.

Vortex or shake to emulsify with the sedimentation cone pointing upwards.



STEP 3 - CENTRIFUGATION

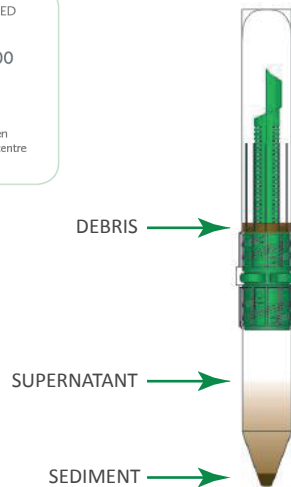
Invert the Mini Parasep[®] SF and centrifuge at 400g for two minutes. (J. Clin. Microbiol. doi:10.1128/JCM.00838-15).

Mini Parasep[®] SF fits all 15ml centrifuge buckets.

NOTE: TO CALCULATE THE REQUIRED RPM FOR ANY CENTRIFUGE.

$$RPM = \sqrt{\frac{g}{1.12r}} \times 1000$$

RPM - rotor speed in revs/min.
 g - centrifugal force (max. 1000g)
 r - radius, horizontal distance between sedimentation cone tip and spindle centre measured in mm.

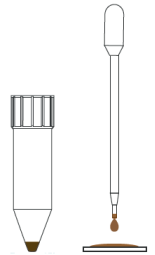


STEP 4 - EXAMINATION

Direct Method

Unscrew and discard the filter and mixing tube. Pour off all the liquid above the sediment.

Pipette one drop of sediment onto a slide, and cover with cover-slip. Alternatively, following laboratory SOP for slide preparation.

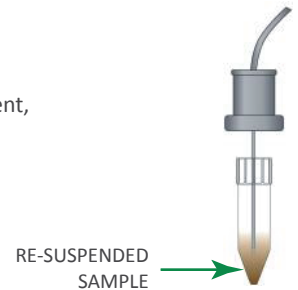


OR

Semi-automated System - ParaSys™

Unscrew and discard the filter and mixing tube. Pour off all the liquid above the sediment.

Insert aspirator into the sediment, press DILUTE to add saline to the sediment. Shake or vortex to re-suspend sample. Press SAMPLE to draw 100µl into the ParaSlide™.



See label for storage conditions and expiry date. Please adhere to the following guidelines when handling Mini Parasep[®] SF. To avoid cross contamination the Mini Parasep[®] SF device should remain closed at all times except when introducing the sample or when retrieving the final concentrated sample for examination.

Mini Parasep[®] SF is available empty or reagent ready
Please ask for details

Products can be ordered direct from Apacor or from an appointed distributor
 Visit our website for all the latest information www.apacor.com or email on: sales@apacor.com

Ordering Information

MINI PARASEP® SF	STORAGE TEMP	PACK SIZE	CODE
Mini Parasep® SF (Devices supplied without reagents)	4-35 °C	50	148800
Mini Parasep® SF (Pre-filled with 3.3ml 10% Formalin Fixative & Triton X)	15-35 °C	40	108900
Mini Parasep® SF (Pre-filled with 3.3ml SAF & Triton X)	15-35 °C	40	148920
Mini Parasep® SF (Pre-filled with 3.3ml Parasafe®)	15-35 °C	40	148930
Mini Parasep® SF (Pre-filled with 3.3ml SafEFix™ Ecological Fixative)	15-35°C	40	148931
Mini Parasep® SF (Pre-filled with 3.3ml SafEFix™ Colour Ecological Fixative)	15-35°C	40	148932

Please refer to the product labelling and pack insert for details of the relevant hazard information.

FIXATIVES	CODE
Formalin 10%	1460
Sodium Acetate-Acetic Acid Formalin Solution (SAF) Fixative	1461
Merthiolate-Iodine-Formalin (MIF)	1465

REAGENTS	CODE
Triton X-100 Solution	1472
Ethyl Acetate	1473
Acetone	1475

STAINS	CODE
Gram's Decolouriser	1476
Field Stain-Solution A	1482
Field Stain-Solution B	1483
Giemsa Stain-Rapid	1484
Lugol's Iodine-Aqueous	1486
Iron Haematoxylin Solution A	1487
Iron Haematoxylin Solution B	1488
Trichrome For Microsporidia	1489
Trichrome For Protozoa	1490
Crystal Violet	1492
Safranin O	1493
Carbol Fuchsin (Gram)	1495
Malachite Green	1501
Modified Z/N Stain Pack Cold Kinyoun	1503
Gram's Stain Pack	1504

Products can be ordered direct from Apacor or from an appointed distributor
 Visit our website for all the latest information www.apacor.com or e-mail on: sales@apacor.com

Bangkok Inter Products Co., Ltd,
 91/247-251 Suwinthawong Road,
 Minburi, Bangkok 10510, Thailand
 Tel: 662 543-7430 Fax: 662 543-7900
 Contact person: Mr Sompong Jaroongkiratiwong
 Email: sompong@b-i-p.co.th Website: www.b-i-p.co.th



APA057 - V3 07/2014